

NEWSLETTER

Finishing Works on the Masjid

An update on the construction work

Well it has been a few months since the last newsletter was published, so its high time to bring the latest news to you. As you can imagine much has been happening.

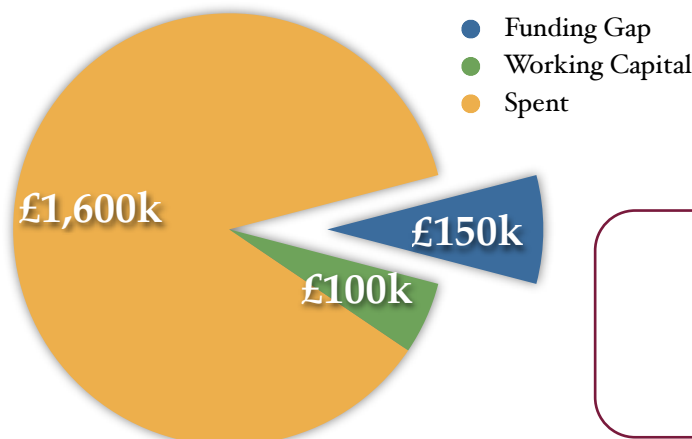


- The heating and ventilation systems have been commissioned and are now live.
- Taps and plumbing is complete
- Kitchen units installed and commissioned
- Wudhu areas are fully tiled
- perimeter mono-blocking completed
- Lighting in progress
- Ceilings in progress
- Main power connection scheduled for 28th Nov 2012
- Awaiting lift installation date

We currently have a funding gap of £150k in order to achieve habitation. This is the immediate milestone we need to achieve.

FUNDING SUMMARY TO GET TO HABITATION

The funds raised in the early part of the summer have allowed us to focus on completion. However certain issues outside our control added to delays. Alhamdo Lillah these are now resolved and we have firm dates for completion of key contracts.



Sponsor a Finish

By the grace and mercy of Allah we are pressing ahead ahead with many finishing works and Insha Allah we shall be using our masjid very soon.

So here is the ideal time to sponsor a finish item and claim Sadka Jariya:

- ☆ *Light fittings*
- ☆ *Carpets*
- ☆ *Books*
- ☆ *Classroom furniture*
- ☆ *Audio equipment*
- ☆ *Hand rails*
- ☆ *Painting*
- ☆ *Landscaping*
- ☆ *Car Park*
- ☆ *Dome*



-Please note most that of these items are either on order or may be in tender. To sponsor the item, contact a committee member first. All items must conform to the design theme.

IETC Contacts

Azhar Din

(e) azhar@antonine.net (tel) 07818 883903

Ibrahim El-Farargy

(e) enquiries@islamictrust.org (t) 07824 644694

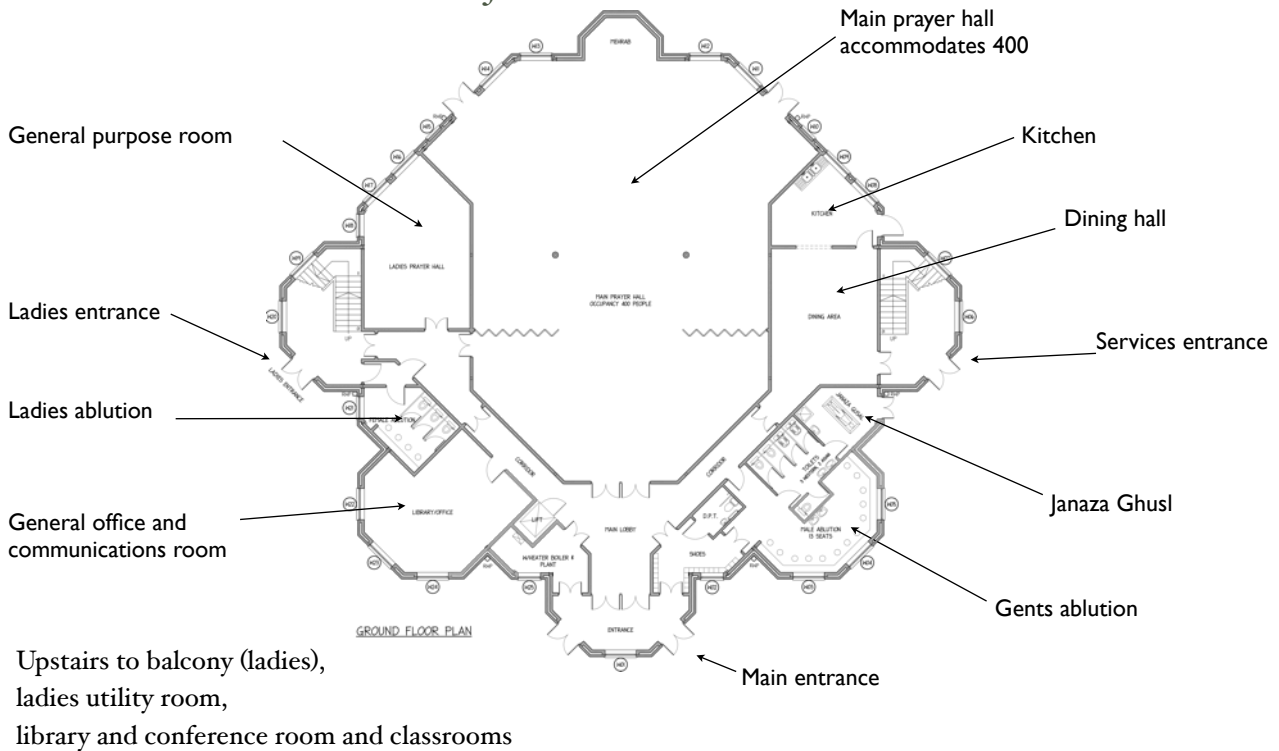
Sponsor this Space

Support the masjid and advertise your business here

contact Azhar Din



GETTING TO KNOW YOUR MASJID



FOLLOW US VIA THE INTERNET:



<http://www.facebook.com/pages/Islamic-Education-Trust-Cumbernauld/136297703137391>



<http://twitter.com/IETC1>